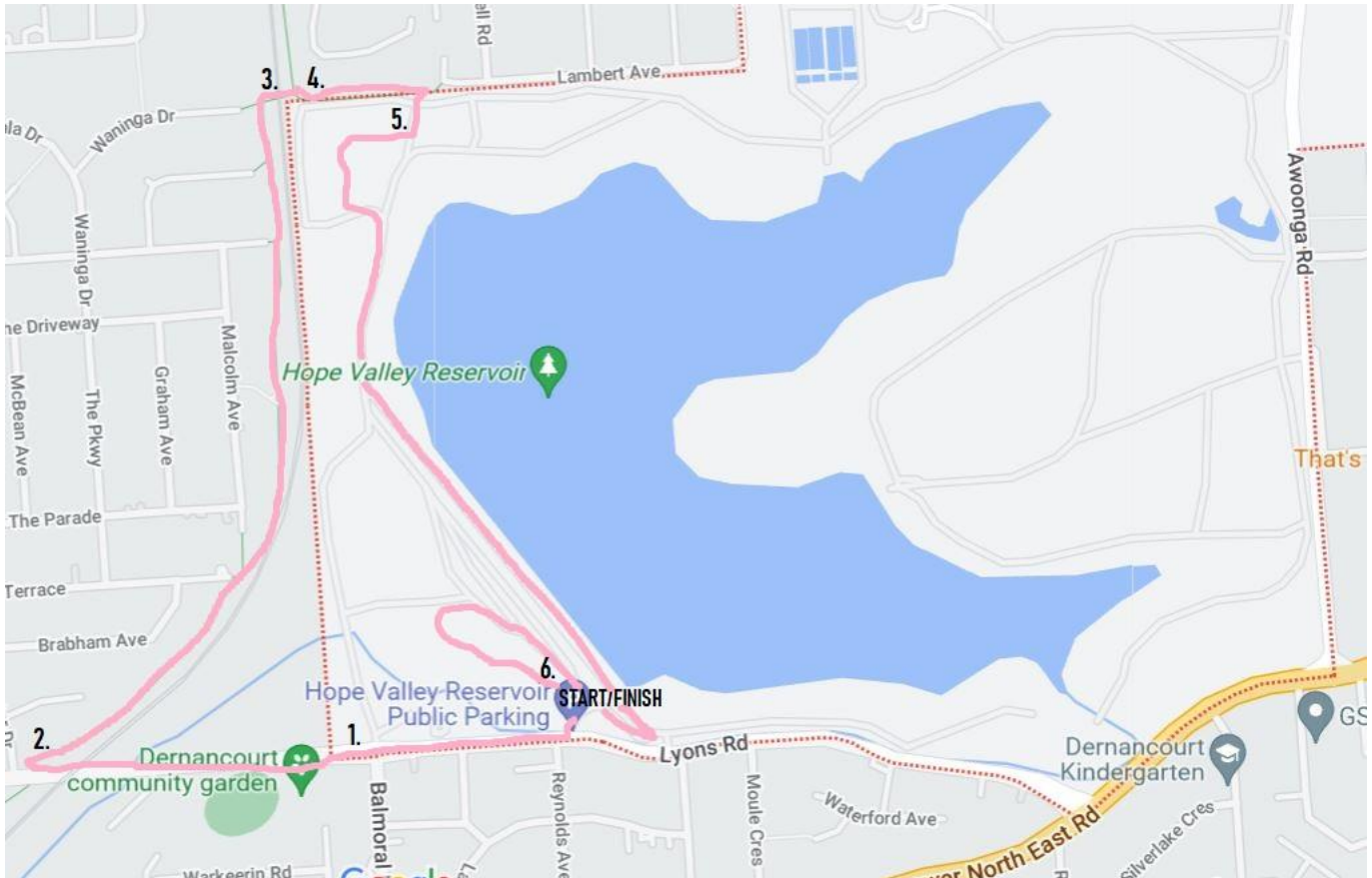


U3A Hope Valley Reservoir Monday Stroll - directions and information (4.1km)



Park in the **Hope Valley Reservoir *1** carpark (off Lyons Road, Hope Valley)

Meet in the carpark by the public toilet

1. Leave the reservoir car park and turn right into Lyons Rd, walk along a gravel path. Note the trees with peeling bark on your left (seasonal)
2. Go under the O-Bahn bridge and turn right into the asphalt path keeping the O-Bahn track on your right. Stop to look for a tree on your right with a round hole (like puckered lips)
3. Continue until you see the underpass (under the O-Bahn) on your right, go under it
4. On your right is the gate to the reservoir park. Don't go through the gate but instead walk along the drain to the next gate
5. Enter the next gate and turn right to walk through the wooden sculpture playground near the toilet
6. Follow the **dam wall *2** back to the car park with an optional little loop when you get back to the carpark. You need to turn sharp right to walk parallel to the top path you have just walked on and pick up a little path on your left by the fence which goes back to the car park through a small forest

Annotations

***1 Hope Valley Reservoir**

This is Adelaide's oldest and smallest active reservoir but it would fill around 1,400 Olympic swimming pools. Hope Valley Reservoir was constructed between 1869 and 1872 as an off-stream storage reservoir to serve the growing population of Adelaide. It was the city's second reservoir, the first being at Thorndon Park which opened in 1860. Hope Valley is interesting because it does not collect surface water from the local catchment but is filled with water diverted by the Gorge Weir on the River Torrens via a tunnel supplied from Kangaroo Creek Reservoir. Hope Valley Reservoir is one of 16 across the state that help supply water to more than 1.7 million South Australians. In 1977 the water treatment plant was constructed on the northern side of the reservoir reserve, off Grand Junction Road, to clean and filter water supplied to customers living in the north eastern suburbs.

***2 Dam wall**

The dam wall is 800 metres long: check for the distance markers on the fence. The lookout shelters along the Hope Valley dam wall on the western side of the reservoir are a prime spot for a stunning view of the reservoir and as a place to sit back and take in the ambience of this great space. There's also the chance to learn some of the history behind the reservoir and the Kurna traditional owners of the region.