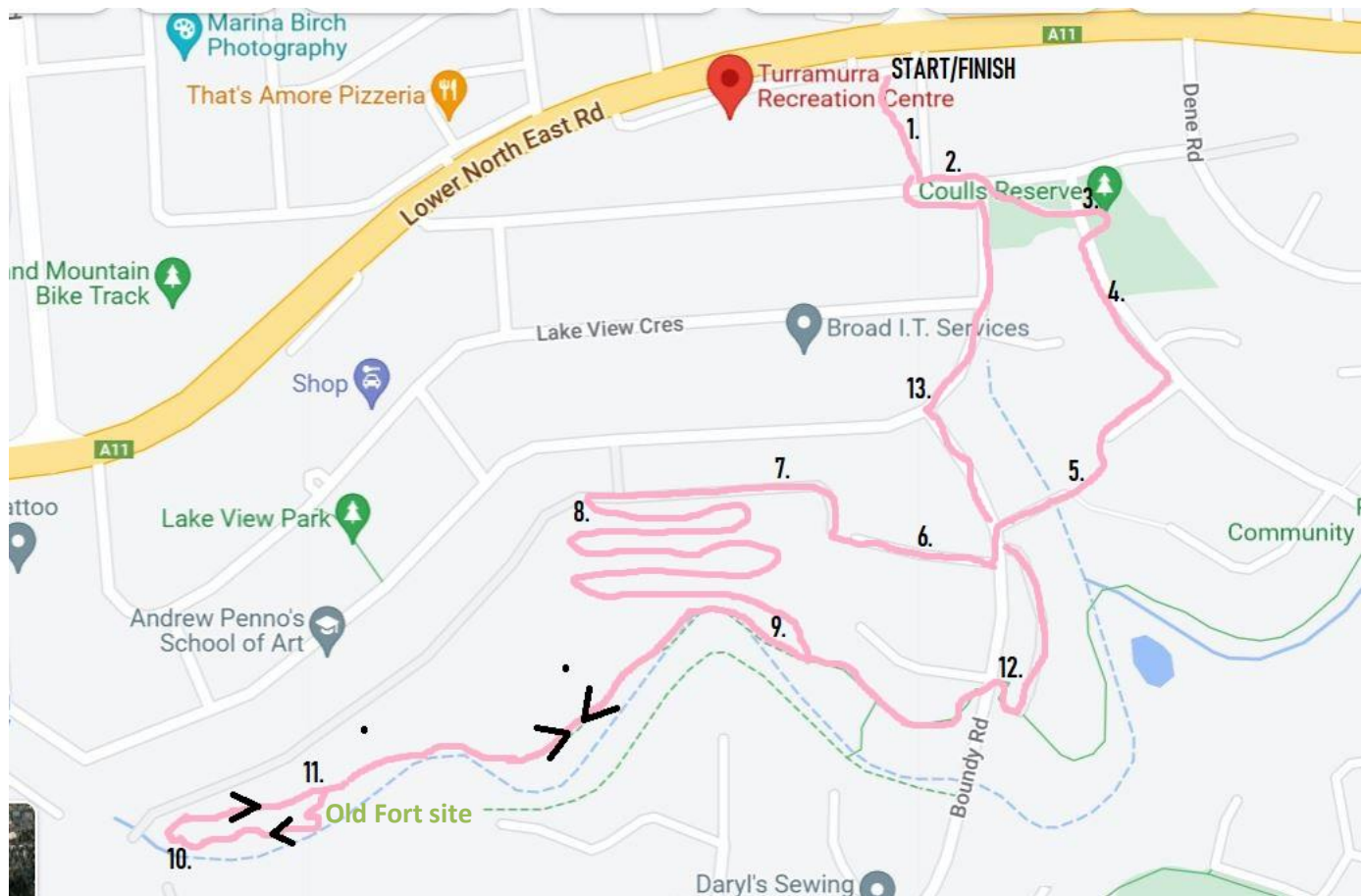


U3A Highbury Aqueduct from Turramurra - directions and information (3.7km)



Meet at Turramurra Recreation Centre carpark (in the section closest to the traffic lights at Valley Road)

START


1. Take the short path from the carpark leading south east down towards the intersection of Hillside Avenue and Combe Place
2. At the end of the path turn left into Hillside Ave
3. Across the street you will see a diagonal path crossing another reserve; take that and when it ends cross Historic Drive to end up in **Coulls Reserve** with a playground. There is a silver information board to read *1
4. Cross back to Historic Drive at the end of the reserve between two large gums. Continue down Historic Drive on the side with a footpath. Lift your eyes to take in views of the hills
5. Take the first street on your right (Garden Court) and go down to its end. There you will see a small reserve, cross it on the grass and end up in the dead end of Kent Road. Follow Kent Road to Boundy Road
6. Turn left into Boundy Road and then turn right into Windsor Road, another dead end street.
7. At the end of Windsor Road walk through a gap in the fence and turn right. The wide earthen path follows the line of the houses veering left.

8. Look left for a narrow path, just past the sign with a map. (This is opposite a gate on your right with a clearing between the houses).
9. Take this path (which zigzags down the slope) and at its end take a sharp right turn into a wider gravel path and follow it. On this path (after it crosses the Aqueduct ditch) you will see the site of a **two storey makeshift fort *2** that kids loved but due to safety issues it was pulled down. There are still a few left over tree trunks where the fort was. Continue on the path until it ends by the gate to Gallery Road and a 2 storey house. Below this spot was **Karpucia Park and Gallery Road Weir *3**
10. Facing the house you will see an unkempt gravel road leading steeply up on your right, go half way up and look ahead at a fenced off dip in the ground with a vertical pipe in it. This used to be where the Aqueduct entered a pipe or tunnel to flow under Lower North East Road to Hope Valley Reservoir. Take the narrow path on your right that follows the bottom of the Aqueduct ditch.
11. The narrow path joins back with the proper gravel path you were on before, here turn left and retrace your steps. Stop to look at the meandering **Aqueduct ditch *4**. Walk past the entrance to the zigzag path you came down on earlier and continue to Boundy Road
12. Cross Boundy Road to enter the forest reserve and keep left at the fork. The path will take you back to Boundy Road; turn right when you reach it
13. Walk up Boundy Road and at the T-intersection turn right into Valley View Drive. Continue on Valley View Drive and at the end of the road turn left into Hillside Ave. Continue back to the carpark on the path you used at the start

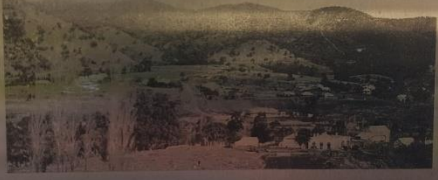
Finish

Annotations

*1 Coulls Reserve silver information board



Master Leo Coulls standing with his parents Mr & Mrs Arthur Coulls at Athelstone House c 1910.
Photograph courtesy of City of Tea Tree Gully Library's Local History Room and reproduced with the kind permission of the Coulls family.



View of Athelstone House and Mill c 1930.
Photograph courtesy of City of Tea Tree Gully Library's Local History Room and reproduced with the kind permission of the Coulls family.

The Coulls family name is synonymous with Highbury, Athelstone House and the old flour mill in particular, being early pioneers of the Tea Tree Gully area.

Athelstone House and Mill have a strong association with the early commercial development of the area. William and Charles Dinham were responsible for the construction of the earliest section of the house, built c1843. It consisted of the four rooms now incorporated into the northwestern portion of the present eleven-roomed house. The mill built c1845, was run by the Dinhams as a grain-crushing venture. This was not successful and John Green Coulls, who held the mortgage, foreclosed in 1855.

John Green Coulls, a Cornishman, sailed with his wife and 2 children from London on 11 August 1839 on board the *Juno*, arriving in Pt Adelaide in February 1840.

In 1843, Coulls, a blacksmith and coachbuilder of Hindley Street, Adelaide, paid the sum of 4,600 pounds to William Dinham for Section 811 'together with the Mill, Steam-Engine, going gear, machinery, furniture and all things now standing on the section.'

***2 Old Fort site (photos show what the fort looked like)**



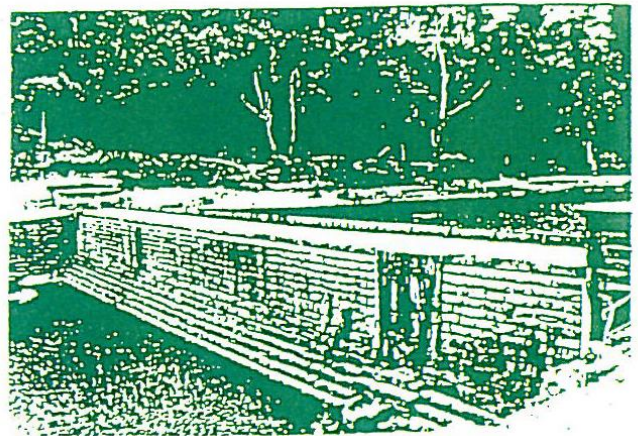
***3 Karpucia Park and Weir**

WEIR AT THE END OF GALLERY ROAD
KARPUCIA PARK

First owned by a cleaner at Hackney bus depot. He owned the park until the Tea Tree Gully council compulsory acquired the park. The name of the park came from the Balkan area in Europe.

AQUEDUCT

Runs from the River Torrens weir at Highbury to the Hope Valley Reservoir. Gravity fed, runs under Turrumurra.



“The Fry family had four sons and they planted a palm tree every time a child was born,” Mr Amber remembers. “But one of the sons died, so they cut one down.”

***4 The Aqueduct ditch (before it was decommissioned looked like that)**

